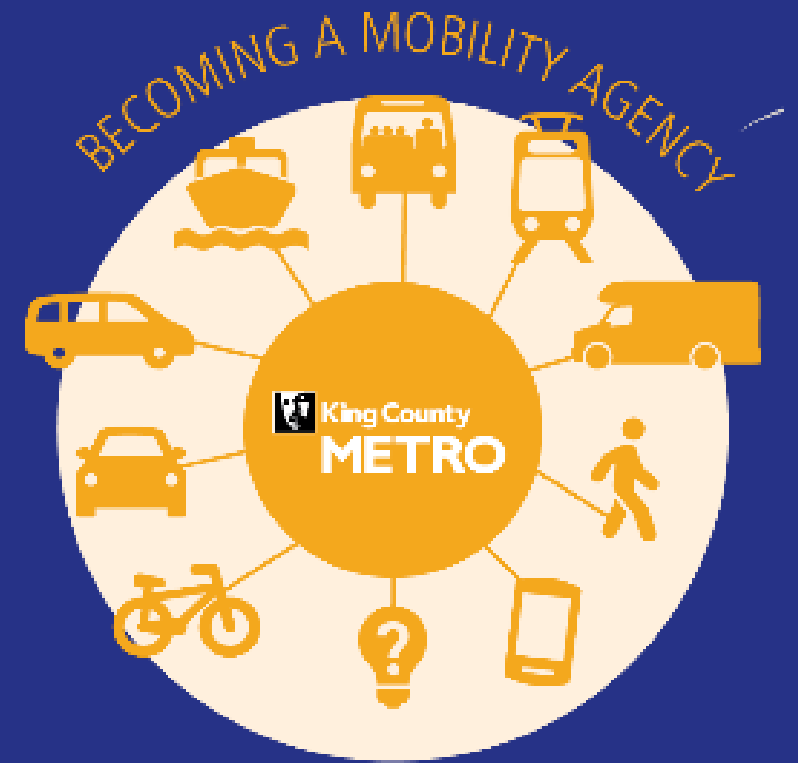


# Renton-Kent-Auburn Area Mobility Plan

Renton City Council  
Committee of the Whole  
November 18<sup>th</sup>, 2019

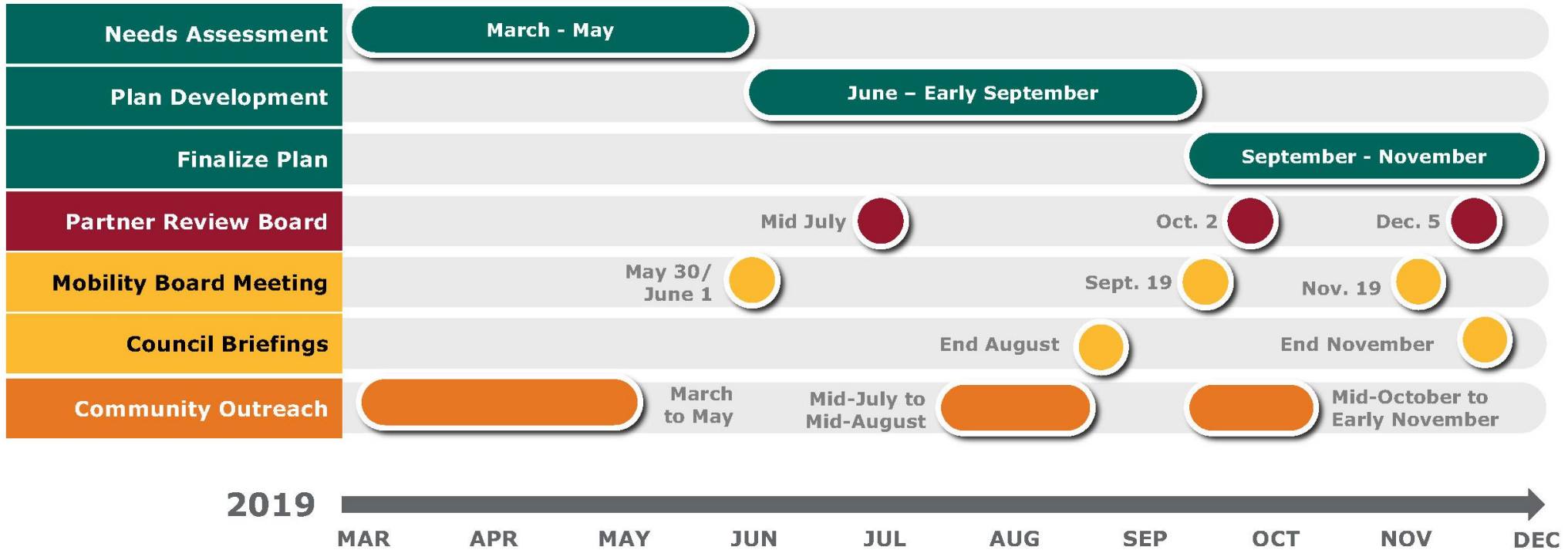


# Mobility Plan - Project Goals

- Increase network efficiency and invest in **equity priority areas**
- Develop a **network of mobility services** to meet riders' area-specific varied needs
- Create a **single route** from Renton to Kent to Auburn to be upgraded to the **RapidRide I Line**
- **Inform, involve, and empower** historically underrepresented people and communities in project decision making



# Plan Timeline



# Community engagement

Stakeholder interviews	Renton Inclusion Task Force, Renton YMCA, Renton Youth & Family Services
Tabling and community events	Renton Highlands Library, Benson Hill PTA, Benson Hill Fred Meyer
Briefings and presentations	Renton Housing Providers Meeting, Renton Commute Trip Reduction Quarterly Network Meeting
Online surveys	Average of 200 – 300 responses on Renton questions
On-board surveys	Onboard surveys on four Renton routes

# What We've Heard...



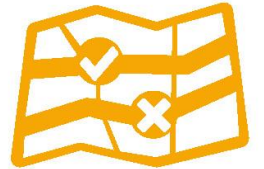
✓ Provide more weekend and late-night service



✓ **Create shorter, more frequent routes to enhance reliability**



✓ Provide more transit access to childcare, schools, jobs, and service/resource centers



✓ **East-west connections are difficult, especially south of F Line**



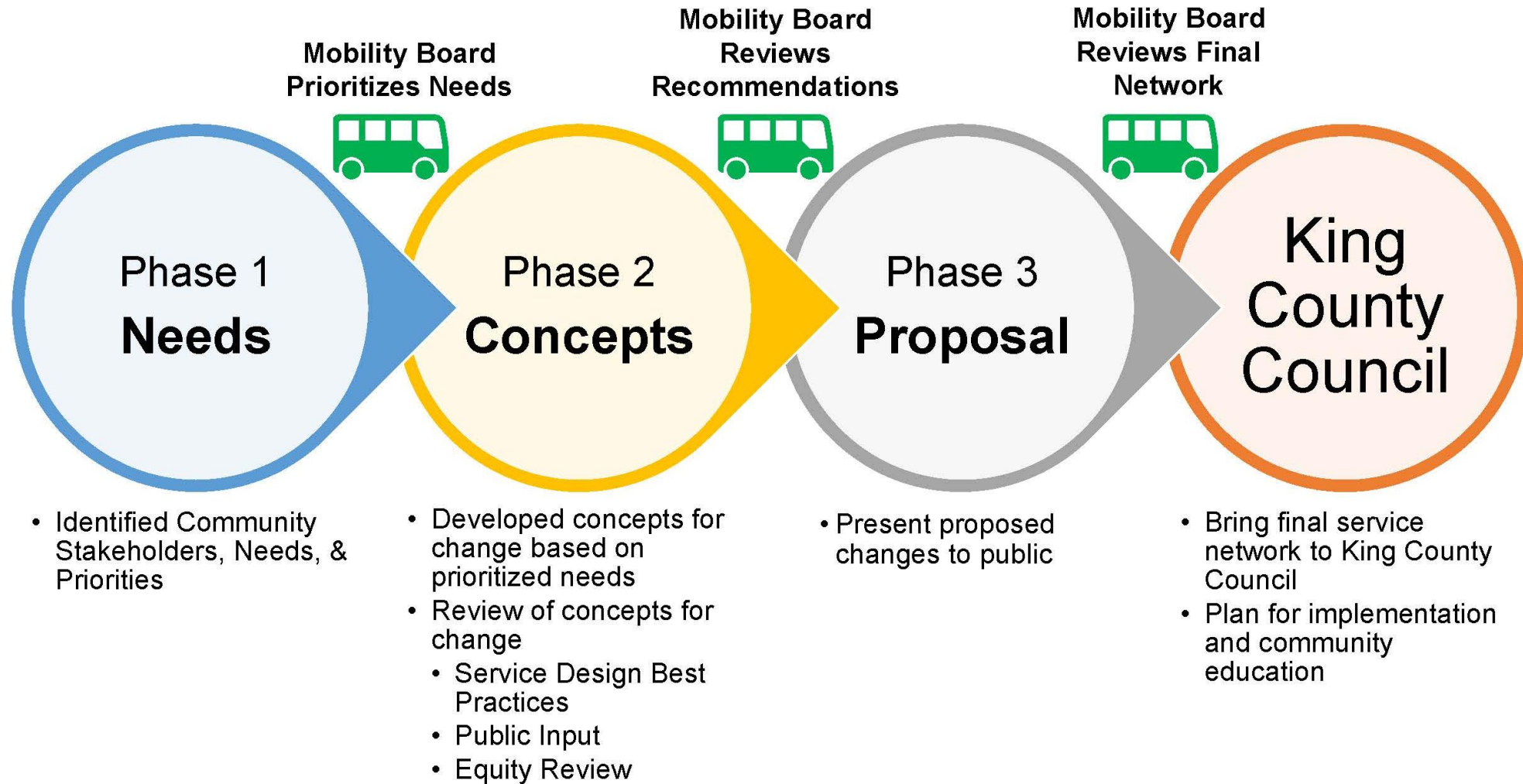
# Mobility Board

A diverse group of **27 members** who live and work in Renton, Kent, Auburn or surrounding areas

- Native English, Somali, and Spanish speakers, and bilingual speakers: Somali, French, Spanish, Arabic, or Farsi
- Seniors, students, and riders with disabilities



# How does Metro make recommendations?



# Prioritized Mobility Board Needs

- More frequent transit service in the Renton Highlands
- Fill service gaps in Renton Highlands and Benson Hill
- Provide better access to community assets
- East-west connections are difficult
- Buses take too long



# Renton: service changes proposed for 2020



- More frequent service
- More evening service
- More direct pathways



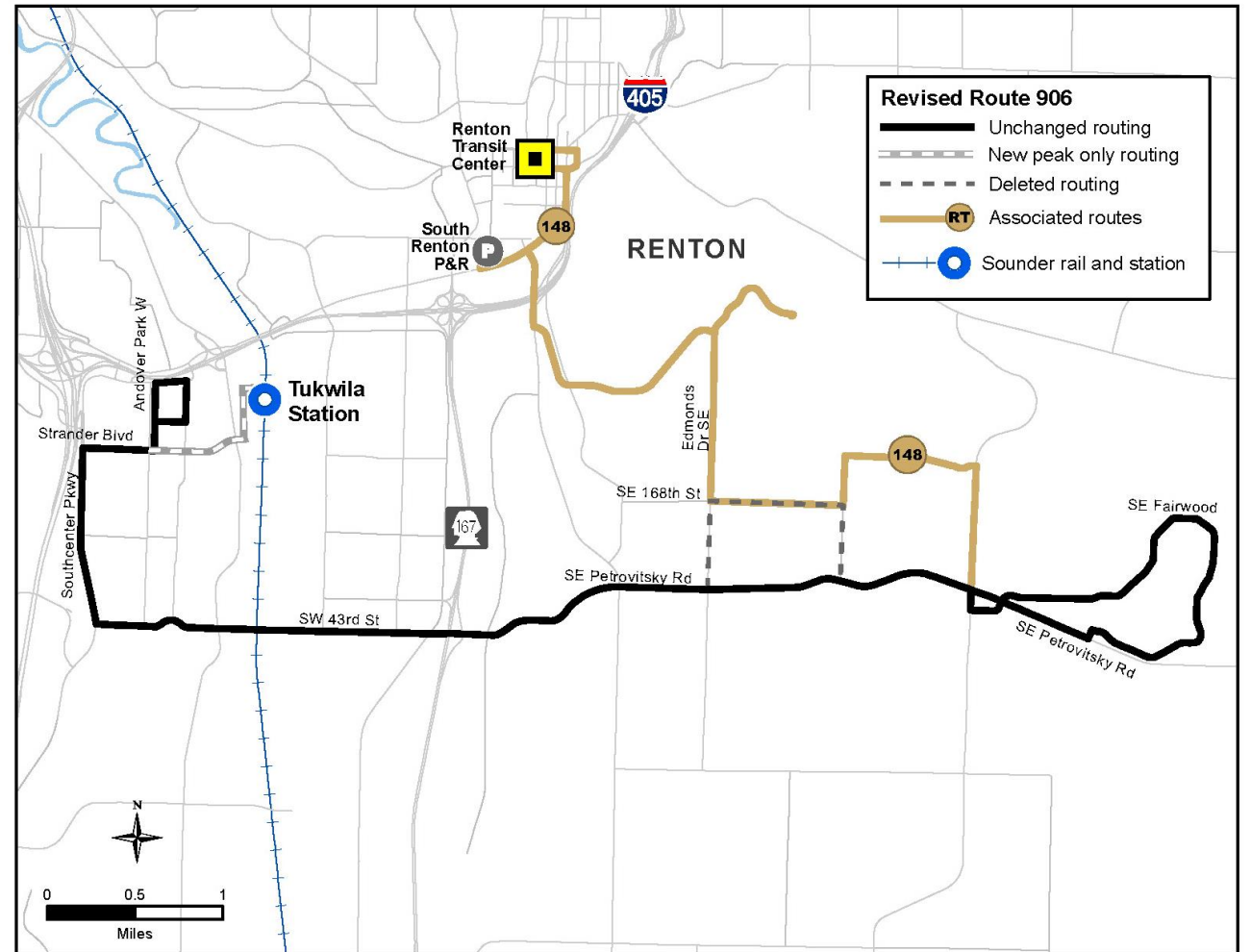
- New frequent route from Renton to Kent to Auburn
- New connection to Sounder



- Proposed flexible services

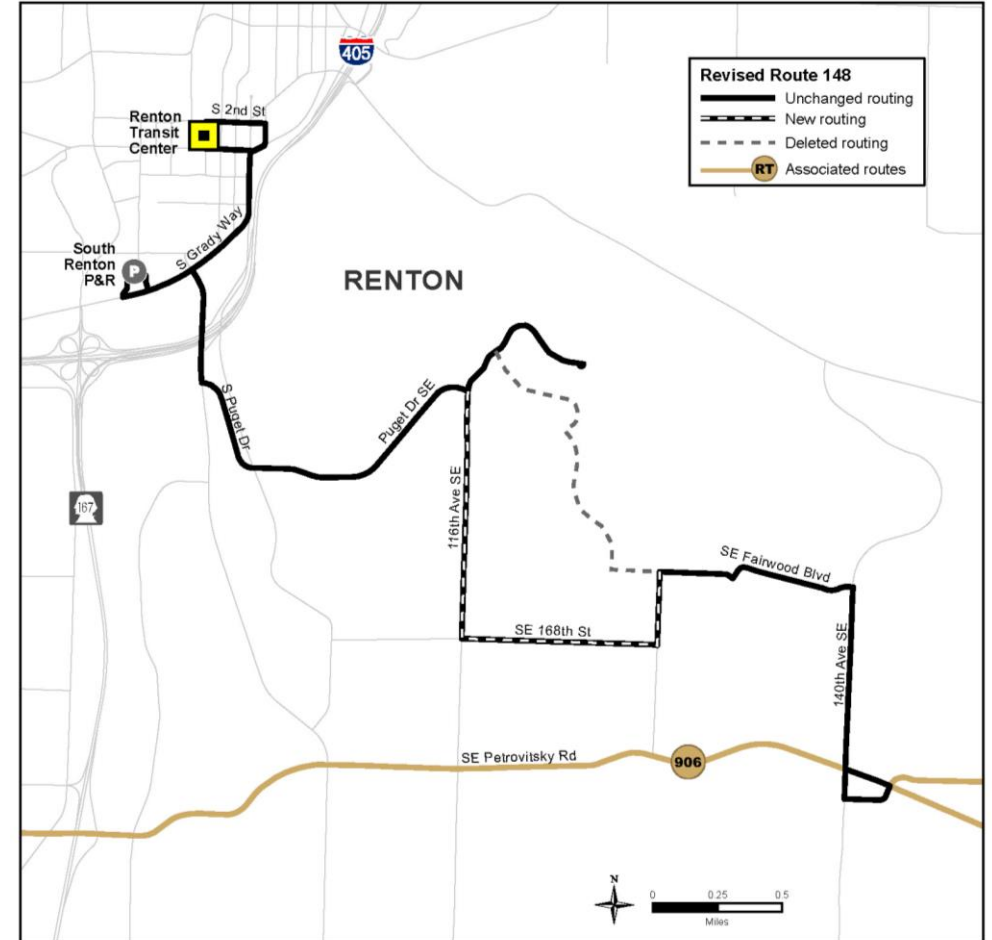
# New Sounder connection and added service

- **New connection** to all Sounder trains from Fairwood, Benson Hill, Valley Medical Center, and the Industrial Valley
- Increased **morning, midday, and evening** frequency and later trips in Fairwood and Benson Hill, and the Renton Industrial Valley
- More **direct pathway**



# Benson Hill

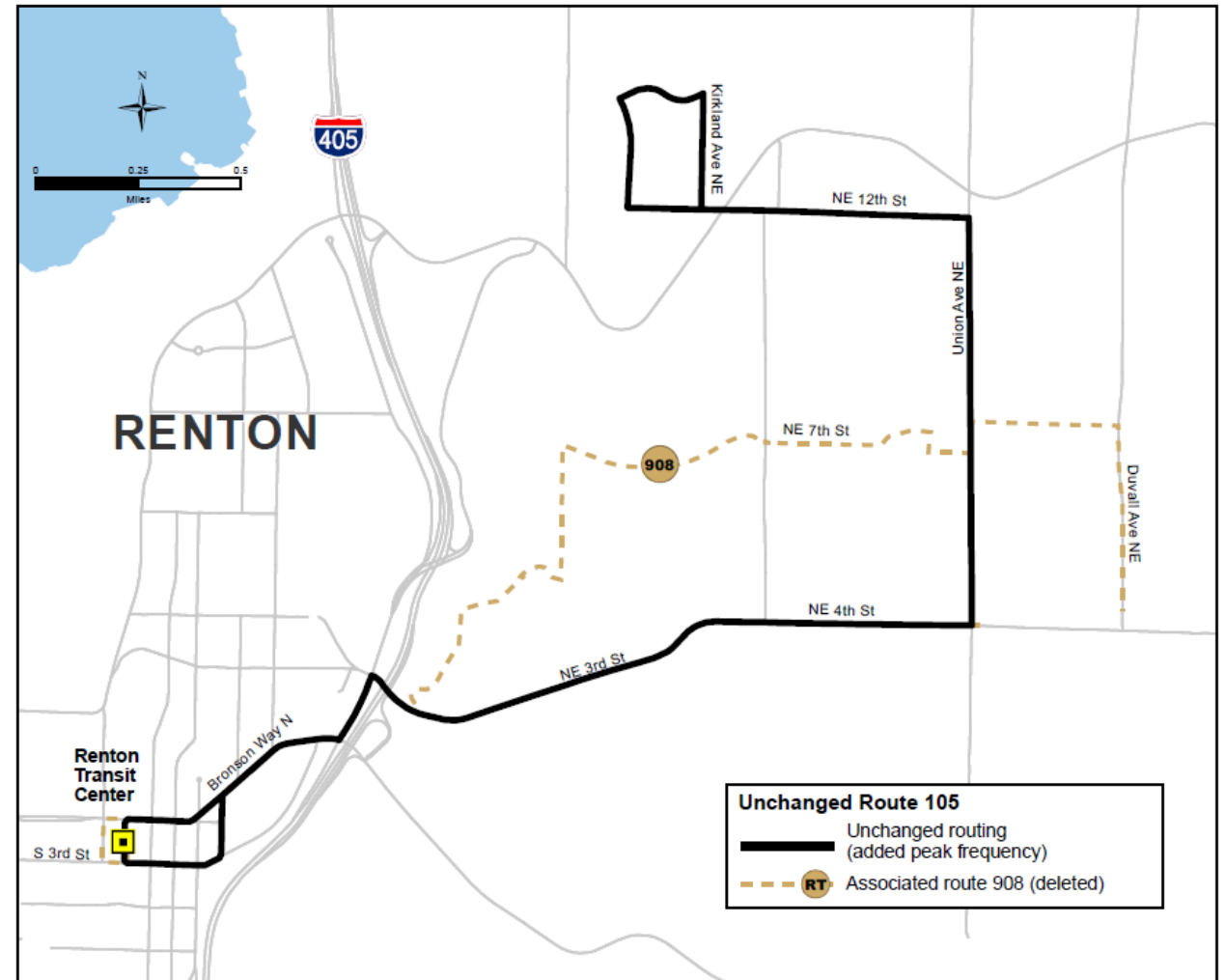
- More **direct pathway** to better serve community assets, including new community center, and housing along 116<sup>th</sup>
- Ongoing engagement and planning for Benson Hill flexible service



CP: G:\Major Projects\Renton\_Kent\_Auburn\_Area\_Mobility\_Plan\Map\MXD\Phase2\RoutesbyRoute\RT148.mxd October 17, 2019

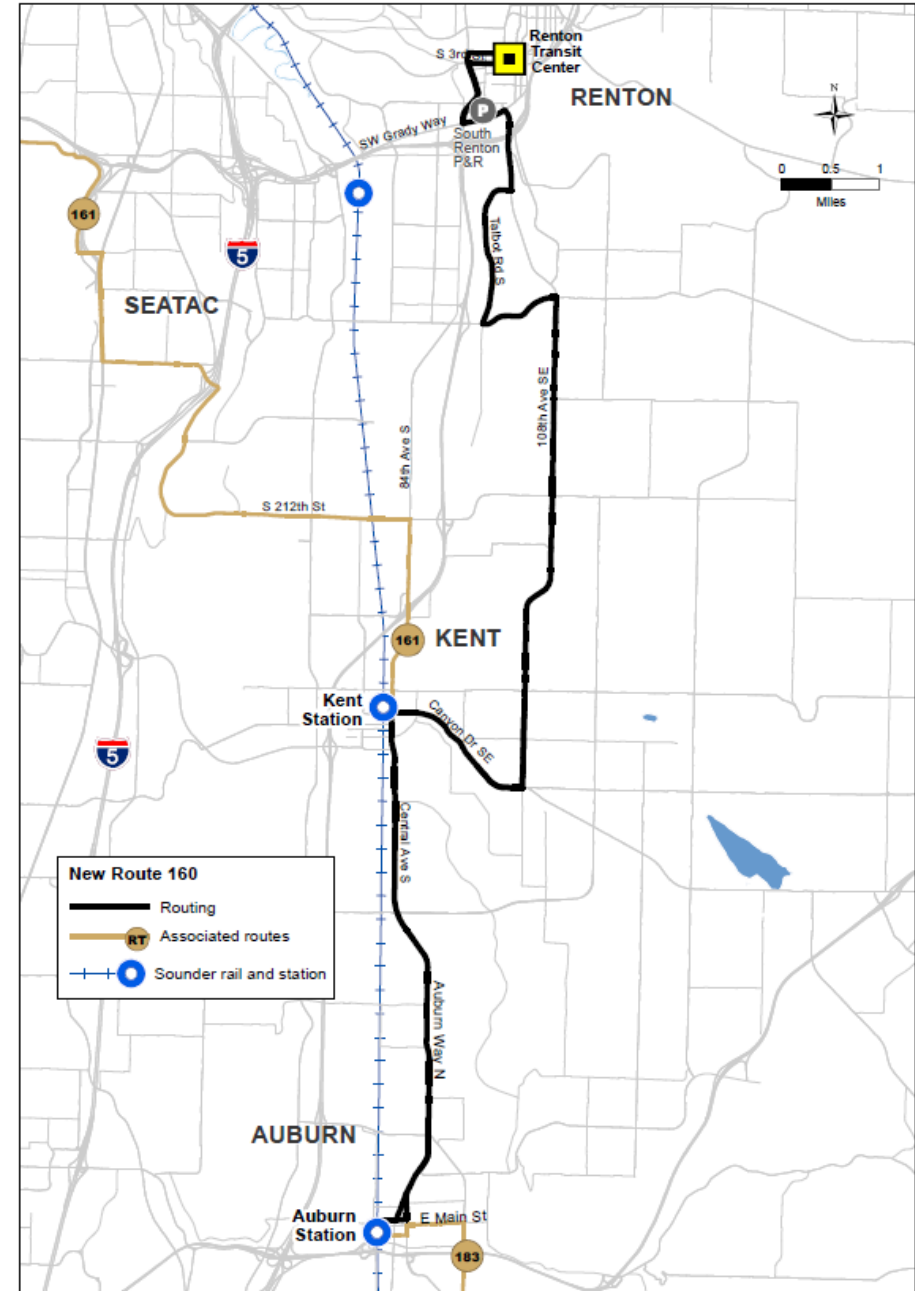
# Renton Highlands

- More investment in Route 105 to provide **15-minute peak period** service
- Invest resources from low-performing Route 908 into Route 105
- Ongoing engagement and planning for Renton Highlands flexible service



# New route: future I Line

- **New frequent route** from Renton to Kent to Auburn
- Will be upgraded to RapidRide I Line in 2023



# Metro Investments in Renton

**2019**

Metro invested service hours in Routes 101, 105, 107, and 906.

**2020**

Metro will invest additional service hours and an updated network through the Area Mobility Plan.

**2022**

Metro will begin planning work for an I-405 BRT service restructure (2024).

**2023**

Metro will begin service on the RapidRide I Line.

**2024**

I-405 BRT will begin service, with associated Metro restructure.

# Next Steps

- Finalization of service change ordinance
- Recommendation to King County Council
- Continue to work with City on service change implementation
- Coordinate with the City on service change education



Questions?



# Renton Area Proposed Transit Service

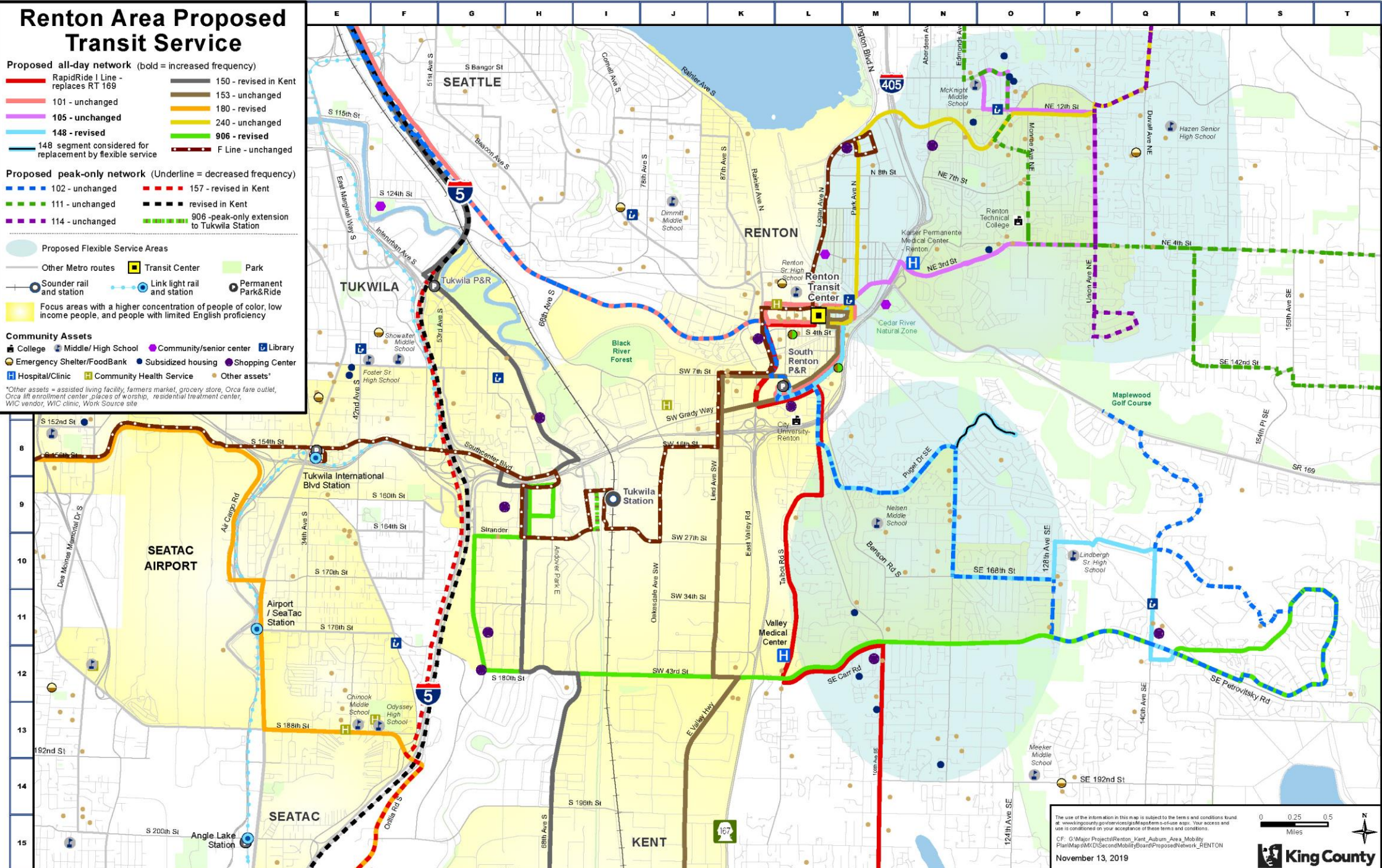
- Proposed all-day network (bold = increased frequency)**
- RapidRide I Line - replaces RT 169
  - 101 - unchanged
  - 105 - unchanged
  - 148 - revised
  - 148 segment considered for replacement by flexible service
  - 150 - revised in Kent
  - 153 - unchanged
  - 180 - revised
  - 240 - unchanged
  - 906 - revised
  - F Line - unchanged

- Proposed peak-only network (Underline = decreased frequency)**
- 102 - unchanged
  - 111 - unchanged
  - 114 - unchanged
  - 157 - revised in Kent
  - revised in Kent
  - 906 - peak-only extension to Tukwila Station

- Proposed Flexible Service Areas**
- Other Metro routes
  - Transit Center
  - Park
  - Sounder rail and station
  - Link light rail and station
  - Permanent Park&Ride
  - Focus areas with a higher concentration of people of color, low income people, and people with limited English proficiency

- Community Assets**
- College
  - Middle/High School
  - Community/senior center
  - Library
  - Emergency Shelter/FoodBank
  - Subsidized housing
  - Shopping Center
  - Hospital/Clinic
  - Community Health Service
  - Other assets\*

\*Other assets = assisted living facility, farmers market, grocery store, Orca fare outlet, Orca lift enrollment center, places of worship, residential treatment center, WIC vendor, WIC clinic, Work Source site



The use of the information in this map is subject to the terms and conditions found at [www.kingcounty.gov/services/gis/mapping/terms-conditions.aspx](http://www.kingcounty.gov/services/gis/mapping/terms-conditions.aspx). Your access and use is conditioned on your acceptance of these terms and conditions.  
 CIP: C:\Major Projects\Renton\_Kent\_Auburn\_Area\_Mobility\_Plan\Map\MKD\Second\MobilityBoard\ProposedNetwork\_RENTON



November 13, 2019

